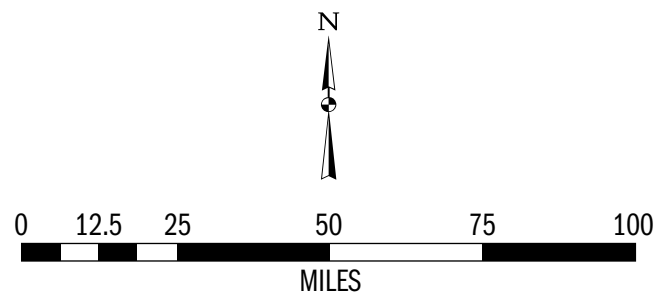
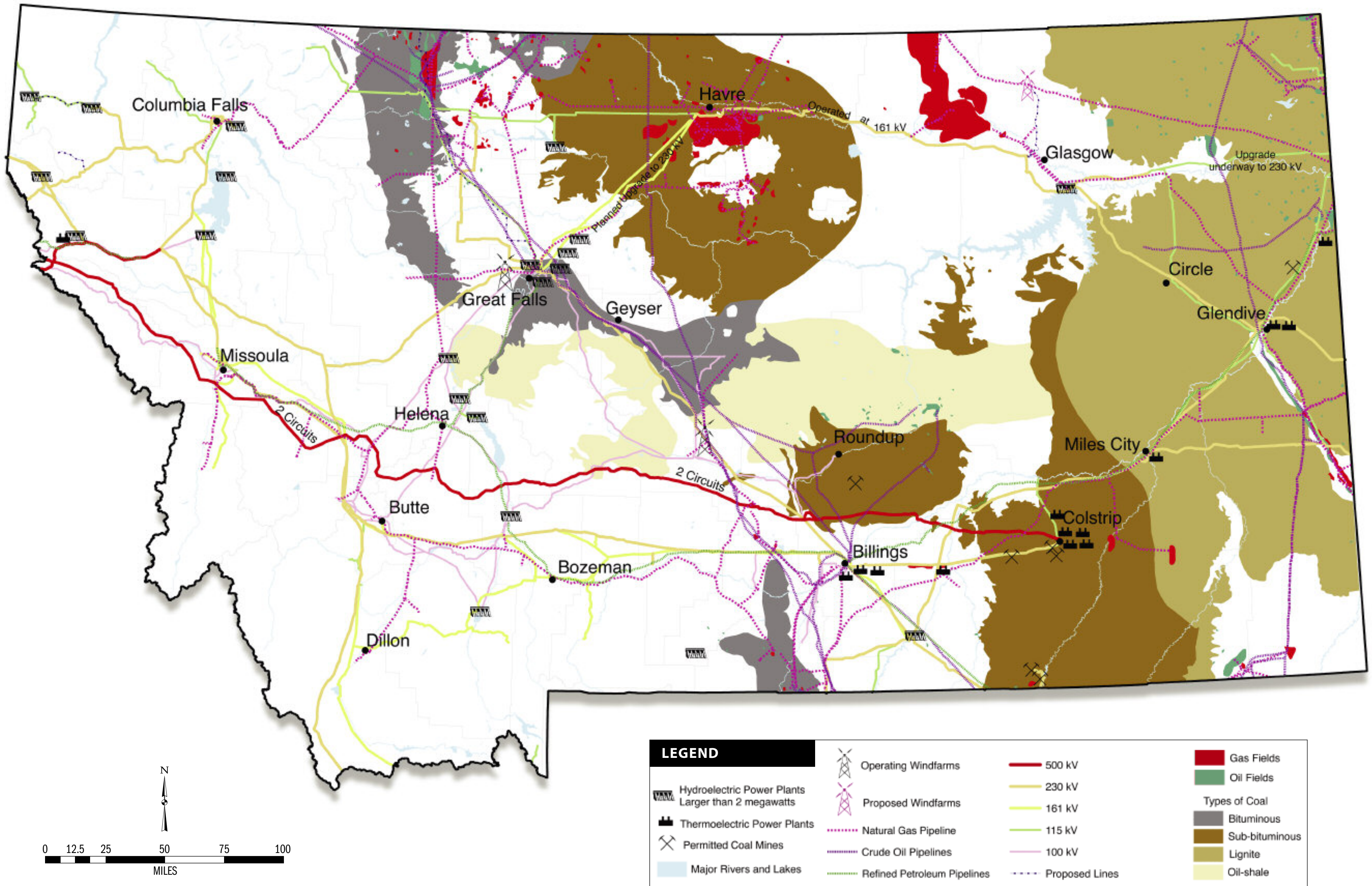
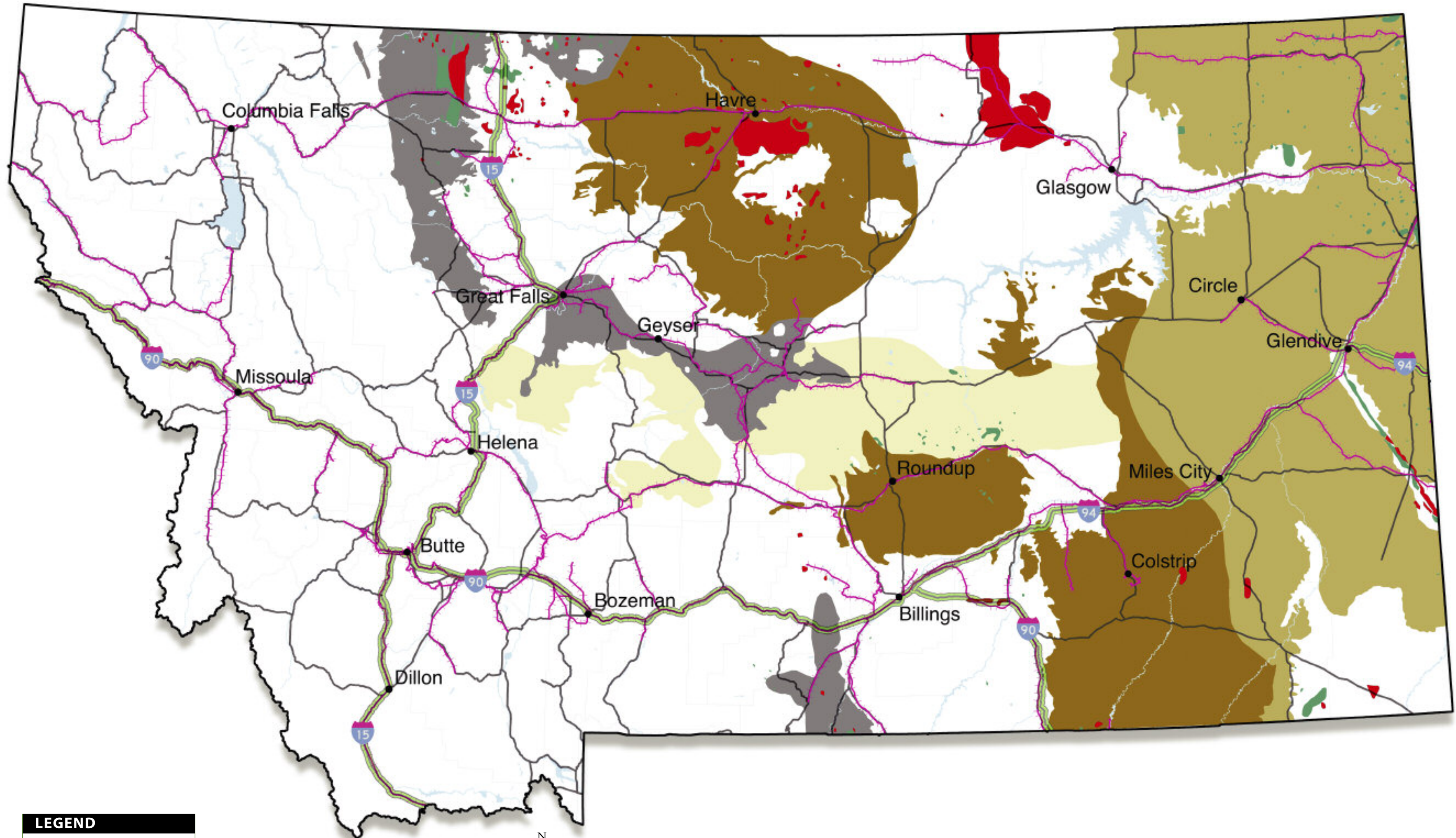


Energy Resources, Major Pipelines and Transmission Lines



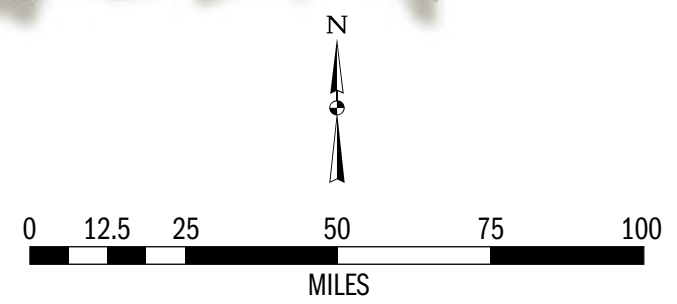
Sources—Permitted coal mines: Department of Environmental Quality, 2006; Pipelines: Board of Oil and Gas Conservation; Transmission lines: Department of Environmental Quality, 2006; Proposed transmission lines: Department of Environmental Quality, 2006; Gas and oil fields: Board of Oil and Gas Conservation, 1987; Coal deposits: Montana State University, 1974. Map generated by Montana Department of Environmental Quality, 2006. Graphic design by Luke Duran / Element L Design. This document was printed at state expense. Information on the cost of the publication can be obtained by writing to the Department of Administration or to the Governor's Office of Economic Development. Copyright ©2006 State of Montana. All rights reserved.

Energy Resources and Transportation Facilities



LEGEND

Railroad	Bituminous coal
Interstate	Sub-bituminous coal
Highway	Lignite
Major rivers and lakes	Oil-shale
Oil field	
Gas field	



Sources—Railroad lines: National Rail Network, 2003; Interstates and highways: U.S. Census Bureau, 1990; Coal deposits: Gas and oil fields: Board of Oil and Gas Conservation, 1987; Coal deposits: Montana State University, 1974. Map generated by Montana Department of Environmental Quality, 2006. Graphic design by Luke Duran / Element L Design. This document was printed at state expense. Information on the cost of the publication can be obtained by writing to the Department of Administration or to the Governor's Office of Economic Development. Copyright ©2006 State of Montana. All rights reserved.